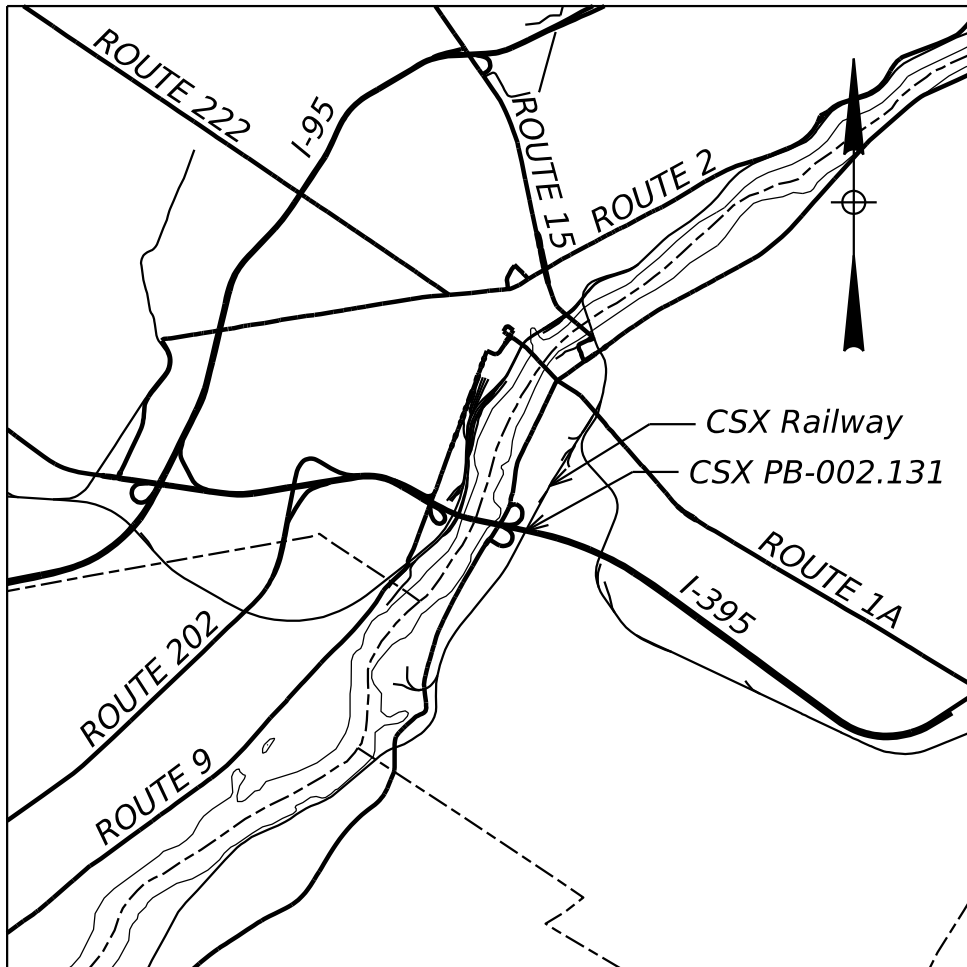


STATE OF MAINE
DEPARTMENT OF TRANSPORTATION



LIST OF DRAWINGS

Title Sheet	1
General Plan & Notes	2
Profile	3
Detail Sheet	4



0 1/2 1
Scale in Miles
LOCATION MAP

BREWER
PENOBSCOT COUNTY
INTERSTATE 395
OVER
CSX RAILROAD

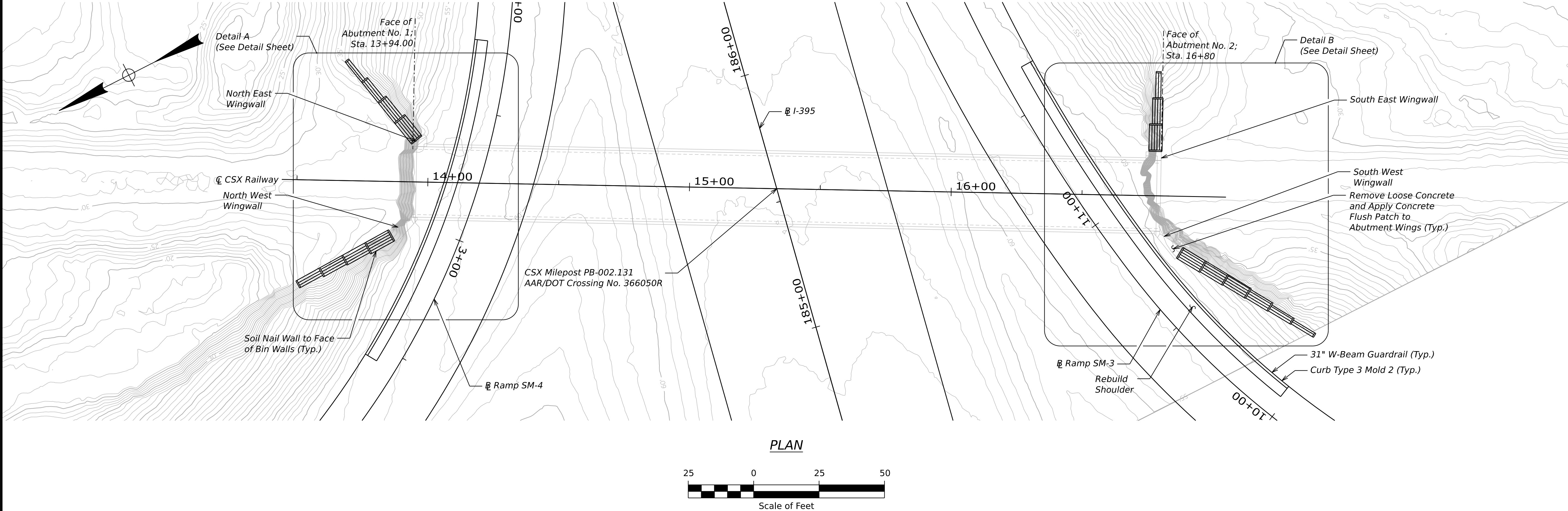
FEDERAL AID PROJECT NO. 029484.00
BRIDGE NO. 1559
AAR/DOT CROSSING NO. 366050R
CSX MILEPOST PB-002.131

CSX RAILWAY
REVIEW PLANS

PROJECT LOCATION	Interstate 395 over CSX Railroad in Brewer Latitude 44°47'00.24" N, Longitude 68°46'10.28" W
OUTLINE OF WORK	Rehabilitation of metal bin walls, guardrail, curb repairs and other concrete repairs.

WIN 029484.00

STATE OF MAINE DEPARTMENT OF TRANSPORTATION		APPROVED		DATE
SIGNATURE		P.E. NUMBER		DATE
COMMISSIONER:		CHIEF ENGINEER:		
PROJECT MANAGER		BY	DATE	
DESIGN-DETAILED	CHECKED-REVIEWED			
DESIGN-DETAILED2	DESIGN-DETAILED3			
DESIGN-DETAILED3	REVISIONS 1			
REVISIONS 2	REVISIONS 3			
REVISIONS 4	FIELD CHANGES			
BREWER INTERSTATE 395 BRIDGE		TITLE SHEET		
SHEET NUMBER		1 OF 4		

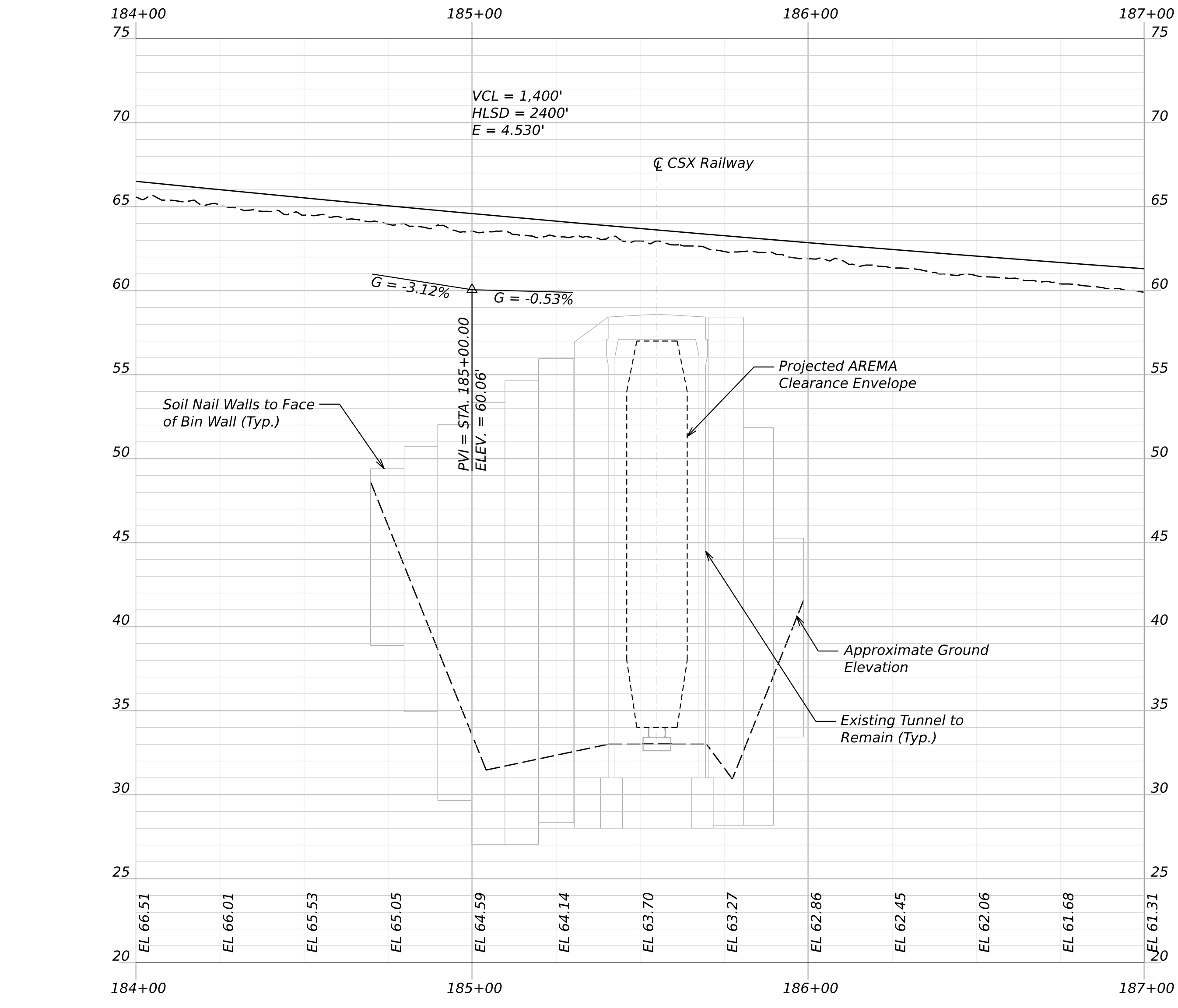


GENERAL NOTES:

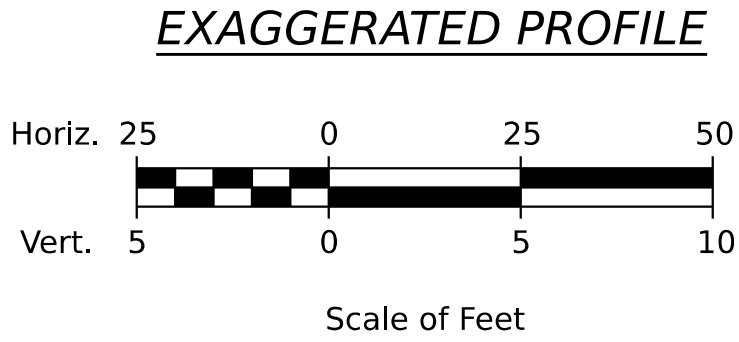
- The mileposts immediately north and south of the crossing, along the CSX Railway, are PB-002 0.131 miles to the north and PB-003 0.869 miles to the south.
- The AAR/DOT crossing number for this bridge is 366050R and the nearest CSX valuation station is XXXXX.
- Upon completion of construction, a full set of electronic as-built drawings, showing actual measured vertical and horizontal clearances, shall be furnished to CSX.
- For demolition, erection and hoisting all lifting equipment and connection devices shall have capacity for 150% of the actual lifting load. The factor of safety provided by the manufacturer in the lifting capacity data shall not be considered in the 150% requirement. A Professional Engineer licensed in the State of Maine shall sign and seal all plans and calculations related to critical lifting.
- During and after completion of construction operations, the Contractor shall clear all CSX Railway drainage ditches to the satisfaction of the CSX Railway Construction Engineer and Inspection Representative.
- The character of flow in the CSX Railway's ditches and/or drainage structures shall not change as a result of this project.
- The Contractor shall consider the Theoretical Live Load Influence Zone depicted in the CSX Public Projects Manual for all subsurface excavation in the vicinity of the railway.
- Any disturbance to soils within the CSX ROW shall adhere to the CSX Transportation Soil and Water Management Policy appended to the CSX Public Projects Manual.
- Temporary construction clearances to be used shall be subject to approval by CSX

CSX RAILWAY
REVIEW PLANS

INTERSTATE 395 BRIDGE CSX RAILROAD BREWER PENOBSCOT COUNTY			STATE OF MAINE DEPARTMENT OF TRANSPORTATION		
GENERAL PLAN & NOTES			PROJ. MANAGER	BY	DATE
			DESIGN-DETAILED		
			CHECKED-REVIEWED		
			DESIGN-DETAILED02		SIGNATURE
			DESIGN-DETAILED03		
			REVISIONS 1		P.E. NUMBER
			REVISIONS 2		
			REVISIONS 3		
			REVISIONS 4		DATE
			FIELD CHANGES		
SHEET NUMBER			BRIDGE NO. 1559		
2			WIN		
OF 4			029484.00		
			BRIDGE PLANS		

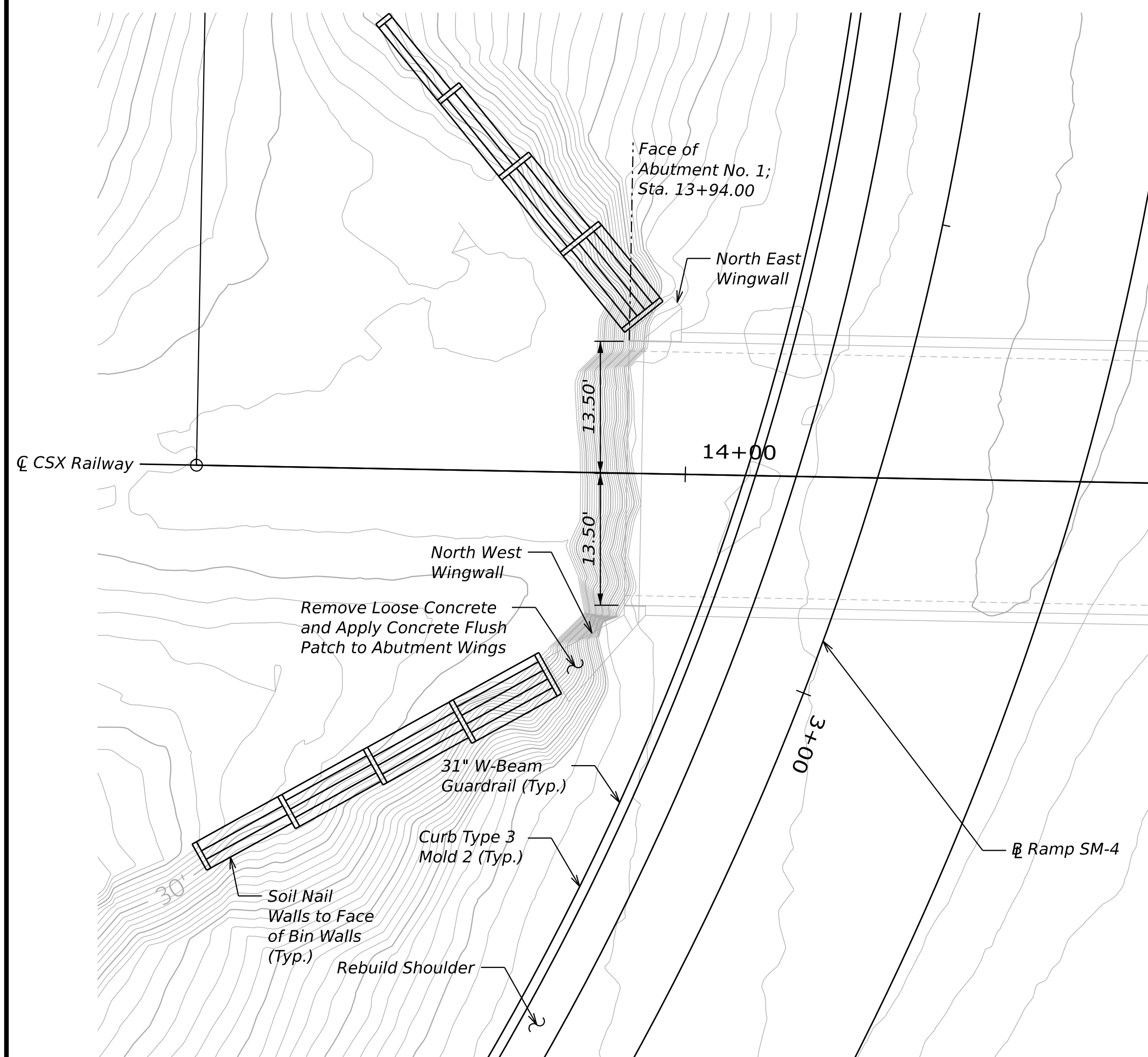


NOTES:
1. The profile shown here is based off the 1985 as-builts and provided for reference.

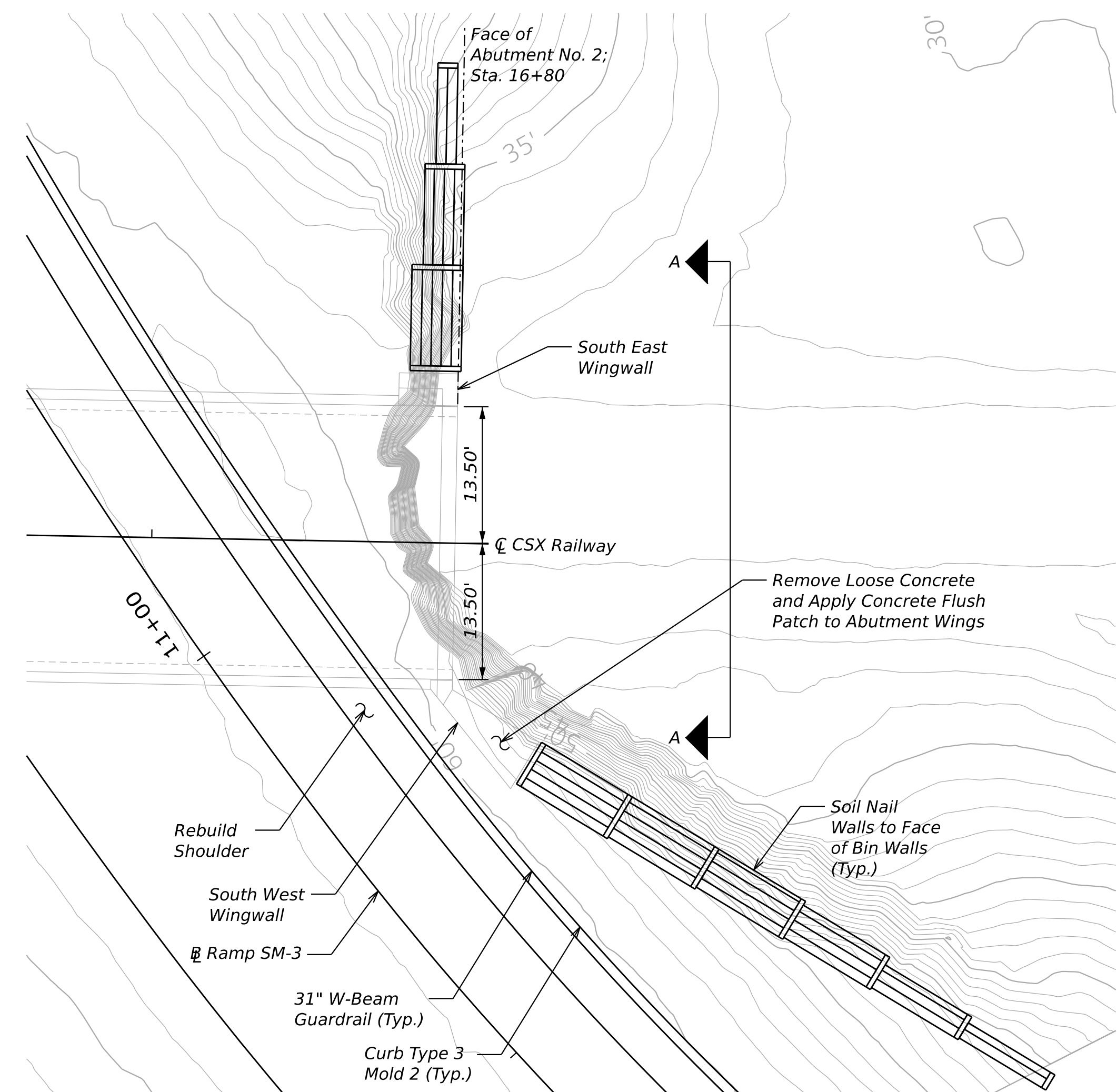


CSX RAILWAY
REVIEW PLANS

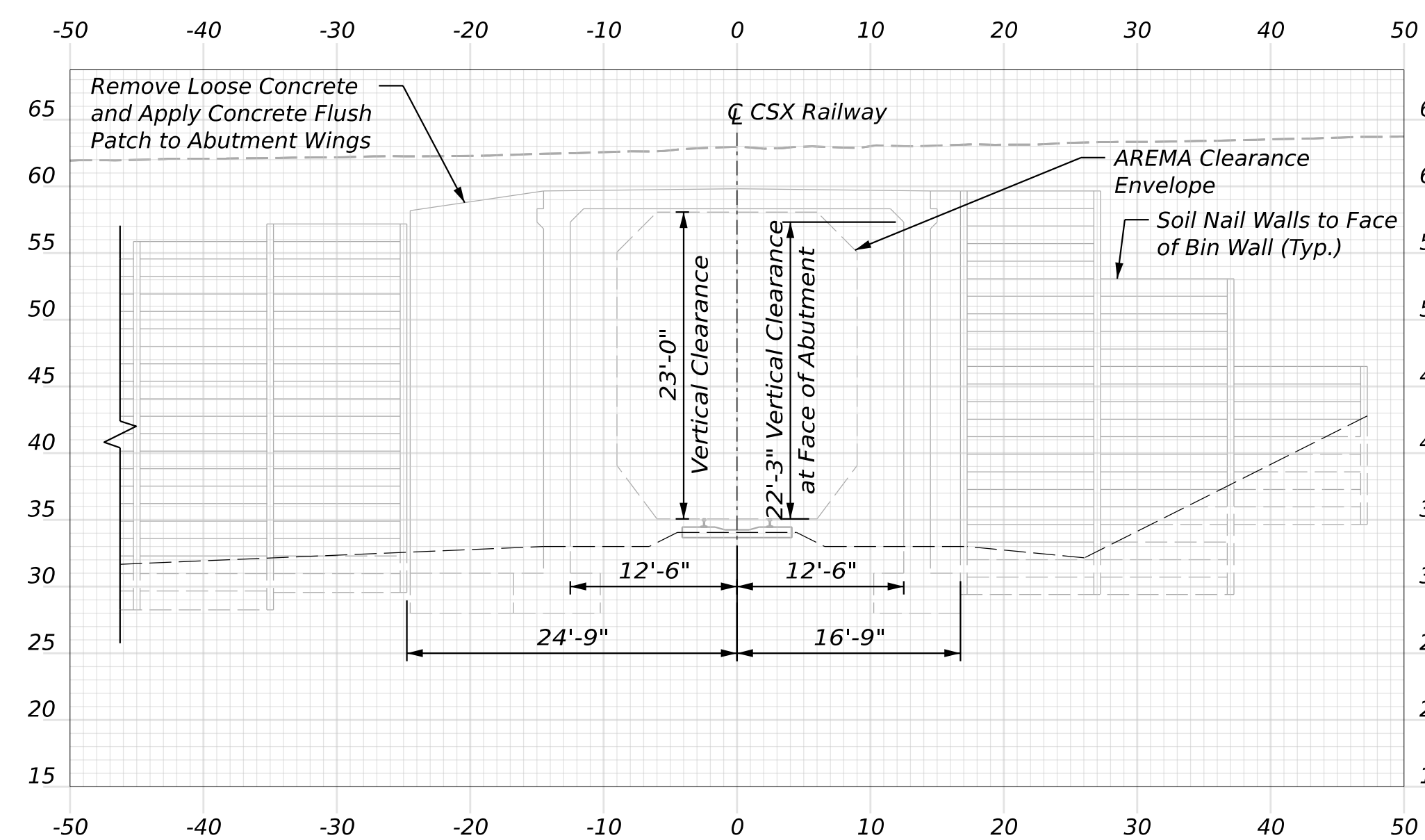
STATE OF MAINE DEPARTMENT OF TRANSPORTATION	INTERSTATE 395 BRIDGE CSX RAILROAD BREWER PENOBSCOT COUNTY			DATE		SIGNATURE		
	PROJ. MANAGER		BY					
	DESIGN-DETAILED							
	CHECKED-REVIEWED							
	DESIGN-DETAILED02							
	DESIGN-DETAILED03							
	REVISIONS 1				P.E. NUMBER			
	REVISIONS 2							
	REVISIONS 3							
	REVISIONS 4				DATE			
FIELD CHANGES								
SHEET NUMBER		3		BRIDGE NO. 1559		WIN	029484.00	BRIDGE PLANS
OF 4								



DETAIL A



DETAIL B



SECTION A-A

CSX RAILWAY
REVIEW PLANS